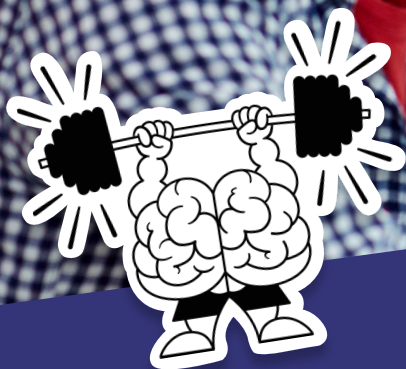


\*toefl ibt.®



# TOEFL iBT® Teacher Resources

This practice test aligns with TOEFL iBT tests from January 21, 2026. It is not an exact replica of the actual test; directions and questions have been adapted for paper format usability.

Copyright © 2025 by ETS. TOEFL and TOEFL iBT are registered trademarks of ETS in the United States and other countries. The Eight-Point logo is a trademark of ETS.

Practice Test 3

## Reading Section

In an actual test, you will answer up to 50 questions to demonstrate how well you understand academic and non-academic texts in English. There are three types of tasks.

Type of Task	Description
Complete the Words	Fill in the missing letters in a paragraph.
Read in Daily Life	Answer questions about everyday reading material.
Read an Academic Passage	Answer questions about academic passages.

## **Reading Section, Module 1**

In an actual test, the clock will show you how much time you have to complete Module 1. You can use Next and Back to move to the next question or return to previous questions within the same module.

In an actual test, you WILL NOT be able to return to Module 1 once you have begun Module 2.

## Reading Section, Module 1

**Fill in the missing letters in the paragraph.  
(Questions 1-10)**

Conservation is the effort to protect plants and animals that are endangered because of human activities. Conservationists sa\_\_ endangered spe\_\_\_\_ by crea\_\_\_\_ areas wh\_\_ they c\_\_ live saf\_\_\_. Conservationists al\_\_ educate t\_\_ public ab\_\_ the impor\_\_\_\_ of preserving the natural world. Conservation is based on research about wildlife and ecosystems that aims to understand their needs and the threats they face. By taking care of the environment, conservationists help ensure a healthy planet for future generations.

**Read an email.**

Subject: Maintenance Notice

Dear Mr. Brown,

We are pleased that you are considering our facility for your mother's birthday party.

Our maintenance team is scheduled to paint your apartment's living room on March 11 starting at 9:00 a.m. We ask that you leave the apartment and not return until one hour after the painters have finished at 12:00 p.m.

Best regards,  
Anna Davis

**11. What room in the apartment will be painted?**

- (A) The kitchen
- (B) The dining room
- (C) The living room
- (D) The bedroom

**12. When can Mr. Brown return to the apartment?**

- (A) At 9:00 AM
- (B) At 11:00 AM
- (C) At 12:00 PM
- (D) At 1:00 PM



# Reading Section, Module 1

**Read a notice.**

## **Welcome to the Library Quiet Zone!**

This area is specifically designated for quiet reading and study to ensure a peaceful environment for all patrons. Please adhere to the following guidelines:

- 1. Noise Levels:** Please keep noise to a minimum. This includes refraining from loud conversations and phone calls.
- 2. Electronic Devices:** Ensure that all electronic devices, such as phones and laptops, are set to silent mode. The volume on headphones must be kept low.
- 3. Conversations:** If you need to have a conversation, please conduct it quietly or proceed to another area of the library.
- 4. Music and Media:** Listening to music or watching videos without headphones is not allowed. Please keep the volume of headphones at a level that only you can hear.
- 5. Respect for Others:** Be mindful of those around you who are studying or reading. Your cooperation helps maintain a serene environment for everyone.

### **13. What can be concluded about the library?**

- (A) It has areas that are not specifically designated as quiet zones.
- (B) It has received numerous complaints about noise levels.
- (C) It is located on the campus of a university.
- (D) It holds a large collection of film and music recordings.

### **14. The phrase "adhere to" in the opening paragraph is closest in meaning to**

- (A) notice
- (B) read
- (C) follow
- (D) admire

### **15. What is indicated about headphones?**

- (A) They are not permitted in the library's quiet zone.
- (B) They are only allowed for use with smartphones and laptop computers.
- (C) They may not be shared between two users.
- (D) They should be kept at a low volume.

# Reading Section, Module 1

## Jet Stream Dynamics

The jet stream is a fast-moving ribbon of air high in the atmosphere that affects global weather. Flowing west to east at speeds of up to 200 miles per hour, it forms due to the temperature contrast between cold polar air and warm tropical air, which creates pressure differences that generate strong winds. In the northern hemisphere, when the jet stream dips southward, it brings cold air and storms to lower latitudes.

The jet stream also influences cyclones and anticyclones, affecting precipitation and wind patterns. The jet stream's dynamics are influenced by factors like the Earth's rotation and uneven heating of its surface. Seasonal changes play a role; it's stronger in winter due to the greater temperature contrast between the poles and the equator. Understanding the jet stream's behavior helps meteorologists predict weather and plan for climate events.

Recent research shows that climate change is impacting the jet stream. The warming Arctic reduces the temperature difference between polar and tropical air masses, which may weaken the jet stream. A weaker jet stream can lead to slower-moving weather systems, resulting in prolonged periods of extreme weather, such as heatwaves or heavy rainfall.

**16. What causes the formation of the jet stream?**

- (A) The behavior of cyclones
- (B) The uneven heating of the Earth's surface
- (C) The difference in temperature between air masses
- (D) The temperature changes that occur seasonally

**17. How does the jet stream affect weather systems in the northern hemisphere when it dips southward?**

- (A) It brings warmer air to lower latitudes.
- (B) It leads to more stable conditions.
- (C) It brings storms to places further south.
- (D) It brings cyclones to higher latitudes.

**18. What is one of the main factors influencing the jet stream's behavior?**

- (A) The Earth's rotation
- (B) The presence of cyclones
- (C) The amount of precipitation
- (D) The direction of wind patterns

## Reading Section, Module 1

**19. What does the author suggest about the impact of climate change on the jet stream?**

- (A) It will have no significant effect on the jet stream.
- (B) It is reducing the temperature difference between polar and tropical air masses.
- (C) It is causing the jet stream to move faster.
- (D) It is increasing the temperature contrast between the poles and the equator.

**20. The word “prolonged” in the passage is closest in meaning to**

- (A) extended
- (B) seasonal
- (C) rapid
- (D) short-term

## **Reading Section, Module 2**

In an actual test, the clock will show you how much time you have to complete Module 2.

You can use Next and Back to move to the next question or return to previous questions within the same module.

## Reading Section, Module 2

**Fill in the missing letters in the paragraph.**  
**(Questions 1-10)**

Economics is the study of how societies allocate resources and make decisions about production, distribution, and consumption. It exam\_ \_ \_ \_ the behavior o\_ governments, busin\_ \_ \_ \_ , and indiv\_ \_ \_ \_ \_ in t\_ \_ marketplace. Stud\_ \_ \_ \_ economics i\_ not ju\_ \_ for th\_ \_ \_ who asp\_ \_ \_ to become economists or bankers. Gaining a basic understanding of economic concepts, like supply and demand, inflation, and employment, benefits everyone. It enables us to make informed decisions and understand the broader economic forces that shape our daily lives.

**Read an email.**

Subject: Medical appointment

Dear Ms. Patel,

Your appointment at Lakeside Medical Center is scheduled for May 10 at 3:00 P.M. Please arrive 15 minutes early for paperwork. You will be seen by Dr. Liu. Click the link below to confirm. To reschedule or cancel, call us at 756-8793.

Regards,  
Brittany Jones

**11. What time should Ms. Patel arrive for her appointment?**

- (A) 10:00 AM
- (B) 2:45 PM
- (C) 3:00 PM
- (D) 3:15 PM

**12. How can Ms. Patel cancel her appointment?**

- (A) By replying to the e-mail
- (B) By clicking a link
- (C) By calling a phone number
- (D) By sending a text message



## Reading Section, Module 2

Read an advertisement.

**Riverdale Parks Department seeks dedicated volunteers to assist with weekend nature programs for families.**

- The programs will begin on **May 1**.
- Volunteers must be available **Saturdays or Sundays, 9 A.M. to 4 P.M.**, and complete a four-hour training session before starting.
- Training sessions are scheduled for the week of **April 15**.
- Previous experience with children preferred but not required.
- Responsibilities include leading nature walks, supervising craft activities, and helping with educational demonstrations.
- Application deadline: **March 15**.

Background check required for all accepted volunteers.

Contact Sarah Mitchell at 555-0199 for more information.

**13. What is this poster mainly advertising?**

- (A) Career opportunities at the Riverdale Parks Department
- (B) Educational programs for children
- (C) Volunteer opportunities for community members
- (D) Training courses for nature guides

**14. What must volunteers do before they can start working?**

- (A) Submit references from previous employers
- (B) Complete training and pass a background check
- (C) Demonstrate experience working with children
- (D) Commit to working both Saturday and Sunday

**15. When is the latest someone can apply for this program?**

- (A) March 15th
- (B) April 15th
- (C) May 1st
- (D) May 9th

## Reading Section, Module 2

### The Golden Age of Television

The Golden Age of Television is often considered to have occurred during the 1950s and 1960s, when TV became a dominant cultural force. This era was marked by groundbreaking shows that experimented with new formats and storytelling techniques.

During this time period, TV saw the rise of anthology series, which presented different stories and characters in each episode, in contrast to traditional ongoing narratives. One influential anthology series was *The Twilight Zone*, which blended science fiction, horror, and drama in thought-provoking ways. Sitcoms reflecting everyday life, like *I Love Lucy*, became a cultural phenomenon. Despite its simple format, the show tackled complex social issues including gender roles and family dynamics. There was also a new focus on live broadcasts, providing viewers with real-time coverage of events and entertainers.

However, the Golden Age was not without challenges. TV networks navigated the balance between artistic innovation and commercial pressures. Advertisers sought to influence content to appeal to mass audiences, which sometimes clashed with creative visions. Nonetheless, the period left an indelible mark on the television industry, setting standards for future programming and contributing to the medium's evolution.

**16. The word “dominant” in the passage is closest in meaning to**

- (A) relevant
- (B) favorite
- (C) leading
- (D) entertaining

**17. Why does the author mention *The Twilight Zone*?**

- (A) To illustrate the popularity of science fiction during the Golden Age
- (B) To highlight the innovative nature of anthology series
- (C) To discuss the impact of horror on television
- (D) To compare different types of TV formats

**18. What does the author suggest about sitcoms like *I Love Lucy*?**

- (A) They made TV less popular during the Golden Age
- (B) They focused on people's daily lives.
- (C) They reduced the influence of advertisers
- (D) They were more popular than anthology series

## Reading Section, Module 2

**19. What is the relationship between paragraphs 2 and 3?**

- (A) Paragraph 3 expands on the challenges mentioned in paragraph 2.
- (B) Paragraph 3 provides examples of the formats discussed in paragraph 2.
- (C) Paragraph 3 introduces a new issue that was not covered in paragraph 2.
- (D) Paragraph 3 contradicts the success of TV shows mentioned in paragraph 2.

**20. Why does the author mention advertisers in the passage?**

- (A) To explain a challenge faced by TV networks
- (B) To point out how TV shows were funded at the time
- (C) To illustrate the role of commercials during live broadcasts
- (D) To criticize the quality of programming during the Golden Age

## Reading Section, Module 1

### Answer Key

Question Number	Answer
1	ve
2	cies
3	ting
4	ere
5	an
6	ely
7	so
8	he
9	out
10	tance
11	C
12	D
13	A
14	C
15	D
16	C
17	C
18	A
19	B
20	A

## Reading Section, Module 2

### Answer Key

Question Number	Answer
1	ines
2	f
3	esses
4	iduals
5	he
6	ying
7	s
8	st
9	ose
10	ire
11	B
12	C
13	C
14	B
15	A
16	C
17	B
18	B
19	C
20	A



## Listening Section

In the listening section, you will answer 30–40 questions to demonstrate how well you understand spoken English. There are three types of tasks.

Type of Task	Description
Listen and Choose a Response	Select the best response to the question or statement.
Conversations	Answer questions about short conversations.
Announcements and Academic Talks	Answer questions about announcements and academic talks.

You WILL NOT be able to return to previous questions.

## **Listening Section, Module 1**

In an actual test, the clock will show you how much time you have to complete each question.

You can use Next move to the next question.

You WILL NOT be able to return to previous questions.

## Listening Section, Module 1

**Choose the best response.**

**1. Man: Who can fix the printer?**

- (A) Mike can.
- (B) Sarah said so.
- (C) At the library.
- (D) Each weekend.

**2. Woman: Please update the expense report.**

- (A) I hope so.
- (B) Yesterday, I think.
- (C) Straight ahead, then left.
- (D) I'll get to it.

**3. Man: Would you mind turning down the music?**

- (A) Sure, I'll do it.
- (B) I just found mine.
- (C) I put it on the shelf.
- (D) The concert is on Friday.

**4. Man: It's quite hot, isn't it?**

- (A) Over the weekend, I think.
- (B) It should cool down tomorrow.
- (C) The movie is at 5 p.m.
- (D) Sure, it's at the bakery.

**5. Woman: Why did you leave early?**

- (A) I think that it could be nice.
- (B) Yes, the trees are beautiful.
- (C) I was feeling unwell.
- (D) At some point in the evening.

**6. Man: When is the next train to Paris?**

- (A) At the main station downtown.
- (B) Probably with breakfast.
- (C) In the evening.
- (D) Yesterday morning.

**7. Man: Would you prefer to fly to the conference or take the train?**

- (A) Both locations have closed.
- (B) The new one should be better.
- (C) Which is less expensive?
- (D) How many are there?

## Listening Section, Module 1

### 8. Man: Are you planning to attend the dance performance?

- (A) They had two rehearsals.
- (B) Maybe once in a while.
- (C) I wouldn't want to miss it.
- (D) Modern choreography.

### Listen to a conversation.

Man: I just got an email saying that the company picnic at Emerald Park has been rescheduled.

Woman: Oh, really? How come?

Man: Apparently the forecast is terrible next Wednesday... heavy rain.

Woman: Oh, that makes sense. Did they mention the new date?

Man: Yes, this Saturday, the tenth.

Woman: I'll mark my calendar. I'm looking forward to having some food in good company.

### 9. Why was an event rescheduled?

- (A) Because of the weather
- (B) Because a park will be closed
- (C) Because of a schedule conflict
- (D) Because Saturday is a day off

### 10. What will the speakers do this Saturday?

- (A) Go hiking in a park
- (B) Socialize with their coworkers
- (C) Go to a restaurant
- (D) Discuss the new schedule

## Listening Section, Module 1

### Listen to a conversation.

Man: I'm having trouble deciding which laptop to buy. There are so many options out there.

Woman: Have you narrowed it down at all?

Man: Sort of. I'm debating between a high-performance model for gaming and a more budget-friendly one for everyday tasks.

Woman: Have you read some user reviews? They might help you decide if the extra cost would be worthwhile.

Man: Yeah, maybe. Though the reviews of the sneakers I bought last month said they're super-durable, and yet I have holes in them already.

### 11. What is the man trying to choose?

- (A) A phone
- (B) A game
- (C) A computer
- (D) A pair of sneakers

### 12. Why does the man mention a purchase that he made last month?

- (A) To imply that he no longer trusts product reviews
- (B) To explain why he prefers a durable product
- (C) To recommend a new product to the woman
- (D) To indicate why he does not want to buy an expensive product

### Listen to an announcement in a classroom.

Man: Before we get started, don't forget that the first draft of your research paper is due on Monday. This draft should include your thesis statement, main arguments, and a preliminary list of sources. It's only a draft, so it's okay if it's not perfect. The goal is to get feedback and refine your ideas. Please submit your draft electronically via the course portal by midnight on Monday.

### 13. What is the main purpose of the announcement?

- (A) To point out flaws in a research paper
- (B) To remind students about an assignment
- (C) To explain how to write a thesis statement
- (D) To invite students to a lecture on Monday



## Listening Section, Module 1

**14. What does the speaker suggest about the first draft?**

- (A) It must contain no errors.
- (B) It should include all final sources.
- (C) It is a major part of the students' grade.
- (D) It is intended for feedback and improvement.

# Listening Section, Module 1

## Listen to a talk in a neuroscience class.

Man: Today we're exploring neuroplasticity, which means the brain's ability to reorganize itself by forming new neural connections throughout life. Neuroplasticity allows the brain to adapt in response to learning, experience, and other stimulation. This remarkable capacity for change is crucial for cognitive development and skill acquisition. There are two main types of neuroplasticity: structural and functional.

Structural neuroplasticity involves changes in the physical structure of the brain, such as the growth of new neurons or the strengthening of synapses. Functional neuroplasticity, on the other hand, refers to changes in the brain's activity patterns, allowing different areas to take over functions previously managed by underperforming regions. For example, if a region responsible for language processing becomes less active, nearby or even distant areas may increase their activity to support language functions. Now, research has shown that engaging in activities that stimulate the brain, such as learning new skills, physical exercise, and cognitive training, can enhance both structural and functional neuroplasticity. Consider aerobic exercises like running or swimming—they help the brain by boosting a special protein called BDNF, which works like fertilizer for brain cells, helping them grow and stay healthy.

Understanding neuroplasticity has important implications for creating strategies that promote brain resilience. By leveraging neuroplasticity, researchers and practitioners aim to support cognitive vitality in people of all ages.

### 15. What is the main topic of the talk?

- (A) The importance of cognitive training to overall brain health
- (B) The brain's ability to reorganize itself by forming new connections
- (C) Changes in the physical structure of the brain over a lifetime
- (D) The comprehensive anatomy of the human brain

### 16. According to the talk, what does neuroplasticity allow the brain to do?

- (A) Adapt in response to learning and experience
- (B) Protect itself from excessive stimulation
- (C) Activate parts of the brain that are not ordinarily used
- (D) Transmit signals faster between neurons

### 17. Which of the following lets certain areas of the brain take over roles previously managed by other regions?

- (A) Cognitive neuroplasticity
- (B) Structural neuroplasticity
- (C) Physical neuroplasticity
- (D) Functional neuroplasticity

## Listening Section, Module 1

**18. What point does the professor make about physical exercise?**

- (A) It is beneficial to exercise at any time of day.
- (B) It allows the brain to cool down and rest.
- (C) It supports brain health by increasing a certain protein.
- (D) It is good to consume protein after exercising.

## **Listening Section, Module 2**

In an actual test, the clock will show you how much time you have to complete each question.

You can use Next move to the next question.

You WILL NOT be able to return to previous questions.

## Listening Section, Module 2

**Choose the best response.**

**1. Woman: Which bus goes to the airport?**

- (A) Bus number 30.
- (B) Jake might do it.
- (C) The flight is quite long.
- (D) A 25-minute drive.

**2. Woman: Why is the gym closed?**

- (A) Yesterday's storm caused damage.
- (B) Be sure to shut down the equipment.
- (C) A new workout routine.
- (D) Because he has two already.

**3. Man: Could you proofread this document?**

- (A) I should have time tomorrow.
- (B) Every weekend over the past few months.
- (C) Yes, last week at the library.
- (D) It's downtown, I think.

**4. Man: Do you mind if I take the aisle seat?**

- (A) Everyone is seated.
- (B) Not for me, thank you.
- (C) Only single seats.
- (D) Not at all.

**5. Woman: Did you repair your bicycle yourself?**

- (A) That brand has a good reputation.
- (B) I took it to a professional.
- (C) No, it's not far from here.
- (D) Sure, I'll take a look at it.

**6. Woman: This café just opened for business, didn't it?**

- (A) Sure, right away.
- (B) On the right.
- (C) Every evening.
- (D) Only last week.

**7. Man: How do you feel about the new marketing strategy?**

- (A) I remember it well.
- (B) I'm still thinking about it.
- (C) I don't know if I can attend.
- (D) I'd like to visit them.



## Listening Section, Module 2

### 8. Woman: Do we need to postpone the software training session?

- (A) A compatibility issue.
- (B) It's already been rescheduled.
- (C) The newest version.
- (D) Thank you for letting me know.

### Listen to a conversation.

Woman: Are you all set for your presentation tomorrow?

Man: Almost. I still need to finalize my slides and add a couple more visuals to make it engaging.

Woman: If you need any help, let me know. I'm done with mine already.

Man: Well, it'd be helpful for me to practice my speech in front of someone...

Woman: I'm free at 4:30, if you want to come by my office.

Man: Thanks! I appreciate it. I'd love to get your thoughts before I deliver it to the full audience tomorrow.

### 9. What does the man still need to do for his presentation?

- (A) Print handouts for the audience
- (B) Finish preparing the visual elements
- (C) Write his speech
- (D) Notify his colleagues about it

### 10. What will the man most likely do this afternoon?

- (A) Practice his speech
- (B) Deliver his presentation to a group
- (C) Review the woman's presentation
- (D) Express his appreciation

## Listening Section, Module 2

**Listen to an announcement on a campus radio station.**

Man: Environmentally minded students will be happy to know that compost collection bins have been placed next to every paper and plastic recycling receptacle in the student center food court. Now, any uneaten food can be placed into a compost bin. The contents of the bins are collected daily by agriculture students who are transforming our food waste into plant food through the process of composting. Please do your part to keep our campus sustainable through recycling and composting.

**11. According to the talk, what do agriculture students do each day?**

- (A) Place composting bins around the campus
- (B) Water plants at the student center
- (C) Recruit volunteers for a recycling program
- (D) Empty the contents of compost containers

**12. What should be placed in the new bins?**

- (A) Plastic bottles
- (B) Paper products
- (C) Food waste
- (D) Metal cans

## Listening Section, Module 2

### Listen to a talk in a chemistry class.

Woman: Today, I want to talk about a fascinating topic in chemistry: catalysts—substances that speed up chemical reactions without being used up. Think of them as helpful assistants that make reactions happen faster and more efficiently, while staying unchanged. This means they don't become part of the final product, so they can be reused again and again in multiple reactions. Catalysts are everywhere. In our bodies, enzymes act as natural catalysts, helping with digestion and metabolism. In industry, they're essential for making plastics, medicines, and fuels. What makes catalysts powerful is that they lower the energy needed for a reaction to happen. Imagine baking a cake: the recipe says to heat the oven to 400°F, but someone gives you a special pan that lets it bake perfectly at 300°F. That pan is like a catalyst—it helps the ingredients become a cake, a product, using less energy. Now, let's look at something even more advanced: nanozymes. These are tiny, artificial materials that mimic enzymes. They're more stable in harsh conditions like heat or acidity, cheaper to produce, and can be tailored for specific tasks. For example, nanozymes are used in environmental cleanup efforts. They can break down harmful pollutants in extreme conditions—like polluted water or industrial waste—things like pesticides, dyes, or heavy metals—turning them into safer, less toxic substances.

### 13. What is the main topic of the talk?

- (A) How a chemical reaction progresses from start to finish
- (B) The role of catalysts in chemical reactions
- (C) Materials used in the production of nanozymes
- (D) The importance of enzymes in digestion

### 14. What point does the professor make about the unchanging nature of catalysts?

- (A) It makes them easier to produce in laboratories.
- (B) It causes them to lack flexibility.
- (C) It allows them to be used repeatedly.
- (D) It makes them inefficient for some complex chemical processes.

### 15. Why does the professor mention a cake?

- (A) To show how catalysts make reactions occur with less energy
- (B) To point out a common problem with digestion
- (C) To illustrate how certain enzymes produce high temperatures
- (D) To explain how chemical reactions can influence cake flavor

## Listening Section, Module 2

**16. What does the example of environmental cleanup reveal about nanozymes?**

- (A) They are expensive to produce.
- (B) They can be found abundantly in nature.
- (C) They perform reliably in extreme settings.
- (D) They are most effective at breaking down plastics.

## Listening Section, Module 1

### Answer Key

Question Number	Answer
1	A
2	D
3	A
4	B
5	C
6	C
7	C
8	C
9	A
10	B
11	C
12	A
13	B
14	D
15	B
16	A
17	D
18	C

## Listening Section, Module 2

### Answer Key

Question Number	Answer
1	A
2	A
3	A
4	D
5	B
6	D
7	B
8	B
9	B
10	A
11	D
12	C
13	B
14	C
15	A
16	C

## Writing Section

In the writing section, you will answer 12 questions to demonstrate how well you can write in English. There are three types of tasks.

Type of Task	Description
Build a Sentence	Create a grammatical sentence.
Write an Email	Write an email using information provided.
Write for an Academic Discussion	Participate in an online discussion.

## Writing Section

### Build a Sentence

Move the words in the boxes to create grammatical sentences.

A clock will show you how much time you have to complete this task.

### Make an appropriate sentence.

#### 1. I'm planning to study abroad next year.

\_\_\_\_\_ to visit.

you / which / planning / countries/ in Europe / are / plan

#### 2. I'm excited to go camping this weekend.

\_\_\_\_\_ near the campground?

that / you / have / black bears / live / heard

#### 3. I'm planning to take a photography class.

\_\_\_\_\_ type \_\_\_\_\_?

the / interests / what / more / you / photography / most / of

#### 4. I'm thinking of adopting a dog this summer.

\_\_\_\_\_ breed \_\_\_\_\_?

which / plan / of dog / you / do / to adopt / planning



## Writing Section

### 5. I'm going to start writing a biography

\_\_\_\_\_ historical figure \_\_\_\_\_ ?

have / about / to write / which / chosen / you / choose

### 6. I'm moving to a new city next month.

\_\_\_\_\_ you \_\_\_\_\_ ?

to move / from here / away / why / have / chosen

### 7. I'm planning to start a new project at work.

\_\_\_\_\_ ?

to complete / the new assignment / when / expect / you / do

### 8. I'm going to submit my application today.

Have \_\_\_\_\_ ?

the position / applied / your coworkers / any / has / of / for

### 9. I'm attending a friend's wedding next week.

\_\_\_\_\_ afterward?

plan to attend / the wedding reception / you / do

### 10. I had a great time at the dinner party last night.

Did \_\_\_\_\_ ?

serve / they / the main course / before / any appetizers

## Writing Section

### Write an Email

You will read some information and use the information to write an email.  
You will have 7 minutes to write the email.

You are a member of the neighborhood association, and you have noticed that the local park needs some maintenance. You decide to contact the association president, Mr. Williams, to discuss the issues and offer a suggestion.

Write an email to Mr. Williams. In your email, do the following:

- Describe the maintenance issue you have observed in the park.
- Explain why it is important to address the issue.
- Make a suggestion for how to deal with the issue.

Write as much as you can and in complete sentences.

### Your Response:

**To:** Mr. Williams

**Subject:** Concern about park maintenance

## Writing Section

### Write for an Academic Discussion

A professor has posted a question about a topic and students have responded with their thoughts and ideas. Make a contribution to the discussion.

You will have 10 minutes to write.

Your professor is teaching a class on sociology. Write a post responding to the professor's question

In your response, you should do the following.

- Express and support your opinion.
- Make a contribution to the discussion in your own words.

An effective response will contain at least 100 words.



Dr. Diaz

Next week we'll be discussing the impact of urbanization on community life. Urbanization has led to the development of large cities with diverse populations. Some people believe that urbanization fosters a sense of community and cultural exchange, while others think it leads to social isolation and the breakdown of close-knit communities usually found in small towns and villages. What are your thoughts on this and why?



I believe urbanization fosters a sense of community and cultural exchange. Large cities bring together people from different backgrounds, creating opportunities for cultural interaction and mutual understanding. Urban areas often have vibrant social scenes that encourage community building.



In my opinion, urbanization leads to social isolation and the breakdown of close-knit communities. The fast-paced city life can make it difficult for people to form meaningful connections. Traditional community bonds, often found in smaller towns, tend to weaken in urban settings.

## Writing Section Answer Key

Question Number	Answer
1	Which countries in Europe are you planning to visit?
2	Have you heard that black bears live near the campground?
3	What type of photography interests you the most?
4	Which breed of dog do you plan to adopt?
5	Which historical figure have you chosen to write about?
6	Why have you chosen to move away from here?
7	When do you expect to complete the new assignment?
8	Have any of your coworkers applied for the position?
9	Do you plan to attend the wedding reception afterward?
10	Did they serve any appetizers before the main course?

## Speaking Section

In the speaking section, you will answer 11 questions to demonstrate how well you can speak English. There are two types of tasks.

Type of Task	Description
Listen and Repeat	Listen and repeat what you heard
Take an Interview	Answer questions from the interviewer

## Speaking Section

### Listen and Repeat

You will listen as someone speaks to you. Listen carefully and then repeat what you have heard. The clock will indicate how much time you have to speak.

No time for preparation will be provided.

**You are being trained to assist customers at a hotel front desk.  
Listen to your manager and repeat what he says.**

**Repeat only once.**

Trainer: Welcome, let's get started and check you in.

Trainer: There is a reception desk over here for you.

Trainer: The elevators are located just off the main lobby.

Trainer: Our hotel lounge is available for relaxation.

Trainer: If needed, we can store your bags in the luggage storage room.

Trainer: Our amenities and services are listed on the notice boards throughout the building.

Trainer: To avoid being charged a late-departure fee, be sure to check out of your room on time.

## Speaking Section

### Take an Interview

An interviewer will ask you questions. Answer the questions and be sure to say as much as you can in the time allowed.

No time for preparation will be provided.

You have volunteered for a research study about social media use. You will have a short online interview with a researcher. The researcher will ask you some questions.

Please answer the interviewer's questions.

Interviewer: Thank you for participating in this study. Today, I'd like to ask you some questions about how you use social media. First, if you were to choose a social media platform to use most regularly, which one would you choose, and why?

Interviewer: Interesting. Do you think social media is more beneficial for younger people or older people? Why?

Interviewer: Alright. Some people believe that social media can help people stay connected, while others think it can lead to feelings of isolation. What are your thoughts on this? Do you agree or disagree? Why?

Interviewer: Good points. Finally, do you think social media use will continue to grow in the future, or will people start to limit their usage? What factors do you think will most affect future usage of social media? Explain your thoughts.