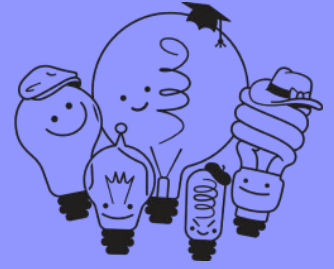


# Comparing English-language tests



	TOEFL iBT®	IELTS® Academic	PTE Academic
What it measures	Communicative language ability in an academic context	English proficiency in academic and nonacademic environments	English proficiency in academic and nonacademic environments
Amount of academic content	100%	About half	Not specified by test provider
Format	4 sections: Reading, Listening, Speaking, Writing	4 sections: Listening, Reading, Writing, Speaking	3 sections: Speaking, Listening, Reading and Writing
Length	Just under 2 hours	2.75 hours	2 hours
Sessions Required to complete the test	1	2	1
Score range	Total: 0–120 Each section: 0–30 (1-point increments)	Total: 0–9 Each section: 0–9 (.25-point increments)	Total: 10–90 Each section: 0–9 (.25-point increments)
Score availability	Real-time unofficial results (Reading and Listening) 4–8 days official	6–8 days for online test 13 days for paper test 3–5 days for computer test	Typically available within 2 days
Scores valid	2 years	2 years	2 years
How speaking is scored	Human raters plus AI scoring, via a secure online scoring network	Human raters at the test center	AI scoring only
Expanded score reporting to institutions	TOEFL® Showcase™, a secure portal with performance details.	none	none
Superscores included in score reports	Yes, MyBest® scores	No	No
Testing locations	170+ countries plus at home	140 countries	70+ countries
Number of accepting institutions worldwide	13,000+	12,000+	3300+
Free prep from the test maker	TOEFL® TestReady™ portal with practice tests, study plans and more	Mock tests, practice exercises, webinars	Test guide, app, sample questions



Learn more at [ets.org/toefl](https://ets.org/toefl)

Copyright © 2024 by ETS. TOEFL and TOEFL iBT are registered trademarks of ETS in the United States and other countries. The Eight-Point logo is a trademark of ETS. All other trademarks are property of their respective owners. andk000013